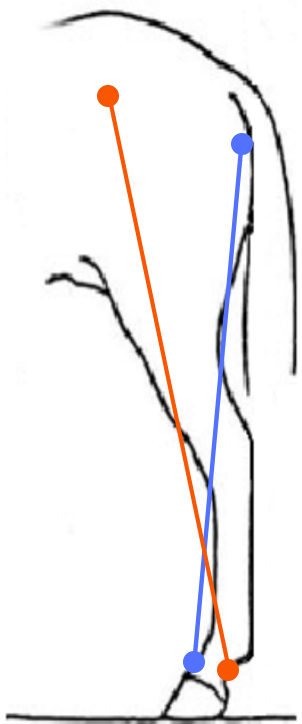
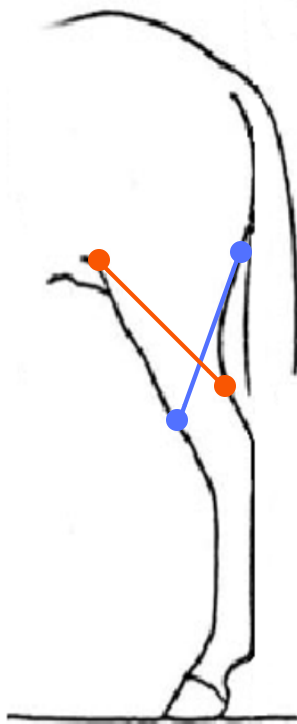


HORSE STIFLE PAIN PROTOCOL

For left stifle. Repeat first three steps on opposite leg once. If both are painful, apply all steps to other side.



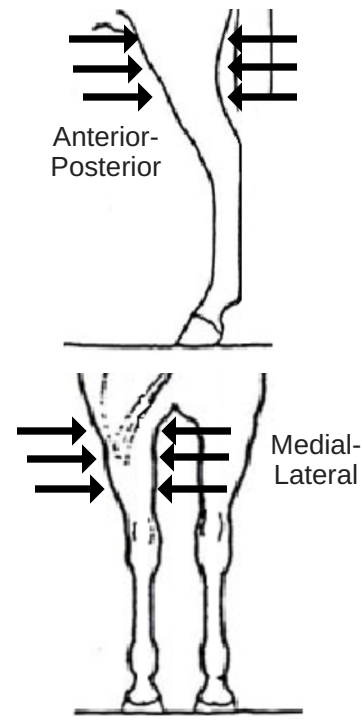
Large X: 20 seconds



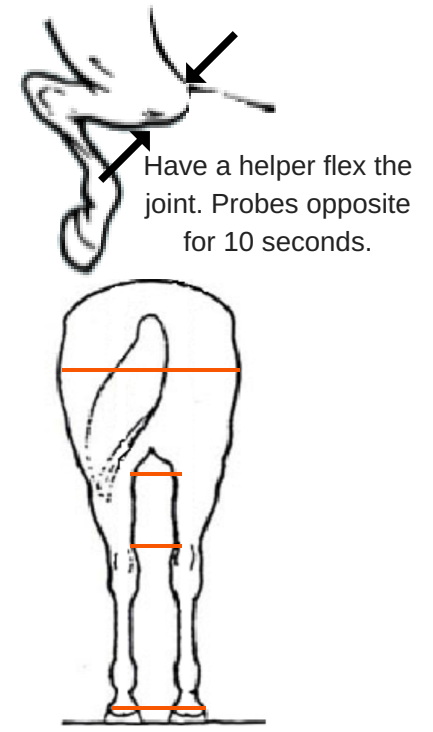
Stars: 10 seconds each. Do multiple stars all directions. Repeat 2-3 times.



One probe inside the stifle and one probe on the outside.



Probes are placed directly across each other on various planes. 10 seconds each.



Connect both sides: 10 seconds each. Finish with 20 minutes CES